

Zach Koutsky Map Submission 10.15.2021 - Demographics

Total Population

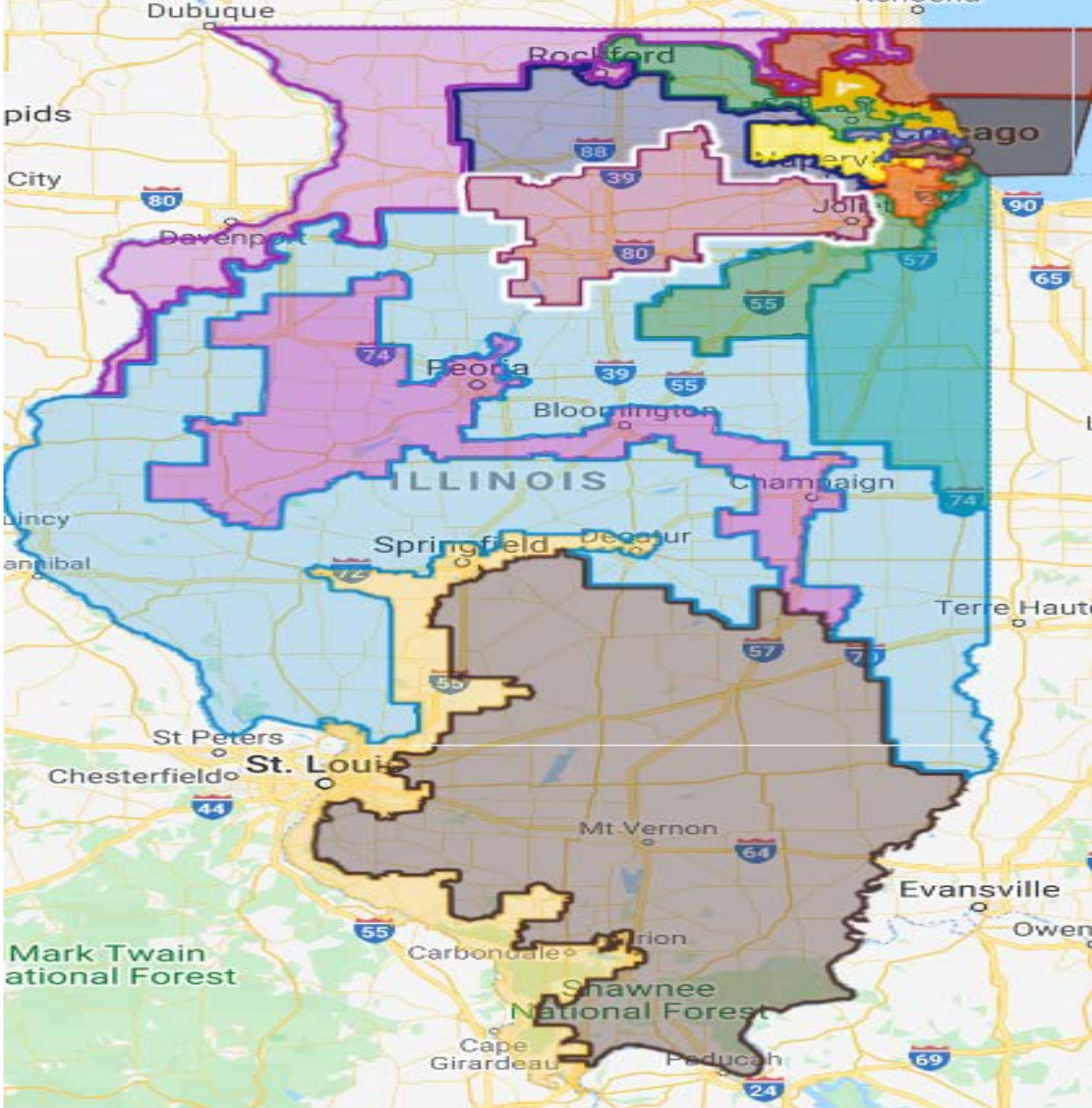
Total VAP Population

District	Total Population	White	Black	Asian	Hispanic	White	Black	Asian	Hispanic
1	753,677	35.68%	48.62%	1.69%	10.94%	36.83%	49.19%	1.89%	9.37%
2	753,677	31.36%	49.80%	0.71%	14.69%	34.20%	49.23%	0.78%	12.85%
3	753,677	59.64%	4.33%	6.47%	26.94%	62.53%	4.35%	6.74%	24.24%
4	753,677	20.91%	3.79%	3.80%	69.59%	24.23%	3.87%	4.20%	65.96%
5	753,677	65.85%	2.68%	8.69%	18.95%	68.30%	2.73%	8.79%	17.12%
6	753,676	65.96%	3.68%	8.77%	18.01%	69.19%	3.61%	8.74%	15.71%
7	753,677	28.26%	43.40%	6.34%	18.67%	31.58%	41.99%	7.08%	16.44%
8	753,692	57.01%	3.56%	16.14%	19.95%	60.66%	3.28%	16.19%	17.24%
9	753,677	61.86%	8.35%	13.63%	11.99%	63.99%	8.26%	13.59%	10.82%
10	753,993	65.03%	4.86%	7.88%	18.40%	68.34%	4.76%	7.72%	16.15%
11	753,346	56.73%	7.24%	8.16%	24.04%	60.78%	7.10%	8.07%	21.05%
12	753,677	67.35%	20.94%	1.72%	4.34%	70.67%	19.49%	1.80%	3.68%
13	753,677	71.02%	11.68%	5.61%	6.63%	73.88%	10.53%	5.92%	5.74%
14	753,677	59.05%	9.22%	5.11%	22.81%	62.90%	9.04%	5.02%	20.04%
15	753,677	90.58%	2.46%	0.60%	2.31%	91.54%	2.49%	0.62%	1.99%
16	753,677	91.41%	1.64%	0.62%	2.61%	92.68%	1.61%	0.61%	2.09%
17	753,677	63.79%	9.33%	3.20%	19.26%	68.44%	8.48%	3.21%	16.43%

Link to Google Map:

<https://www.google.com/maps/d/viewer?mid=16orELR4P4IA3q4NjuC3qoYamugXtRRvu&ll=41.34677101707597%2C-88.252249499999999&z=10>

State of Illinois



Northeastern Illinois

