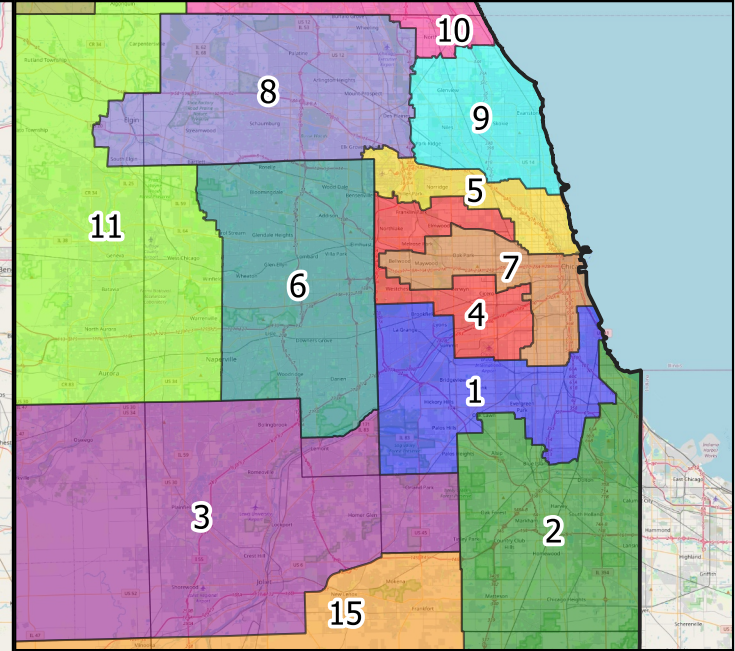
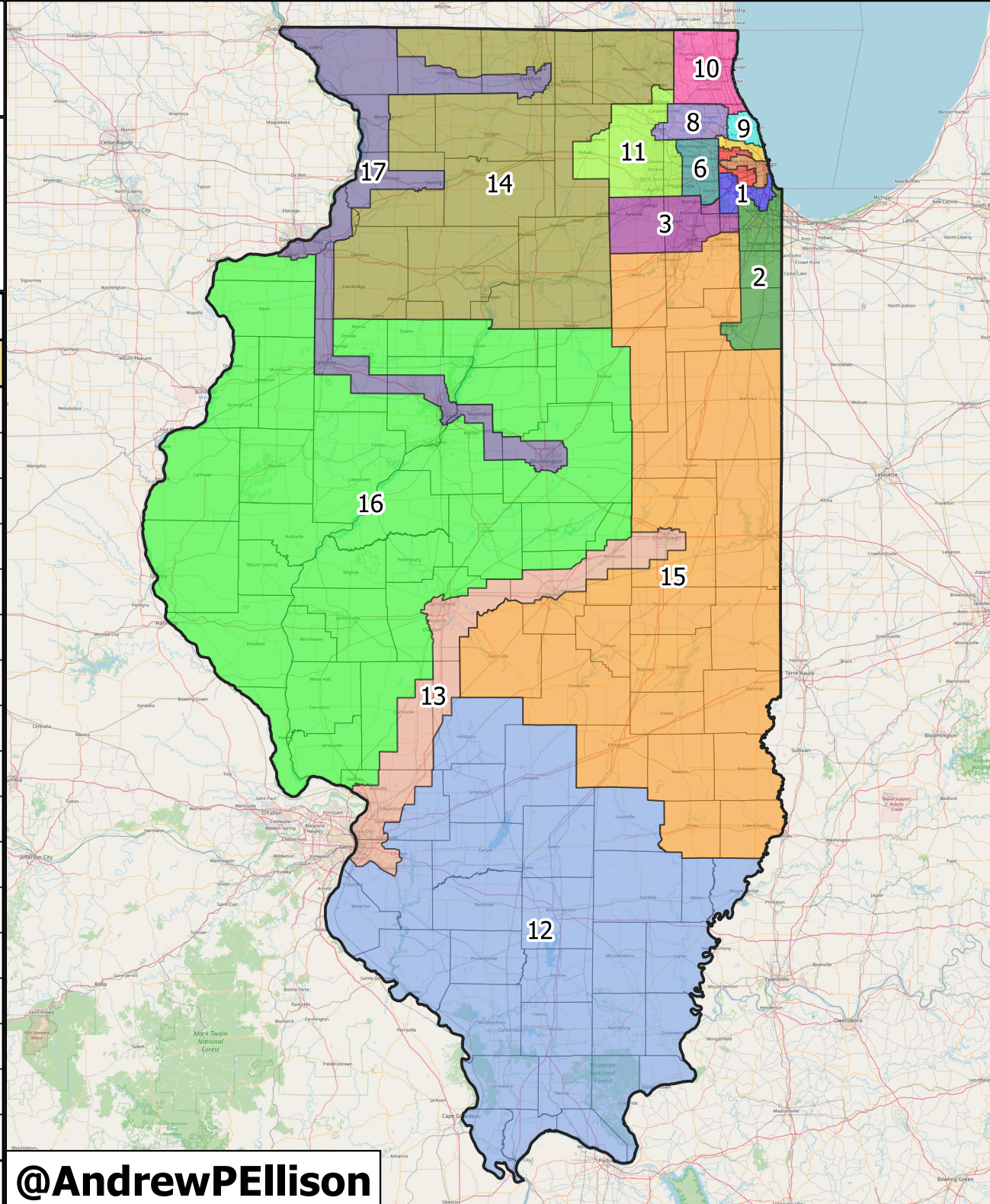


2021 Illinois Congressional Redistricting Proposal

By: Andrew Ellison
 Data Source: Dave's Redistricting App
 Shapefile Source: DRA, Census Bureau
 Background Map: OpenStreetMap

2020 Census Voting Age Population

CD	White	Black	Latino	Asian	Native
1	33.4%	50.1%	13.5%	2.9%	1.6%
2	31.0%	50.7%	16.5%	1.5%	1.8%
3	63.5%	10.4%	17.7%	7.3%	1.8%
4	24.4%	5.2%	67.5%	3.2%	5.0%
5	63.8%	5.5%	20.7%	9.5%	1.9%
6	68.4%	4.9%	12.8%	12.8%	1.4%
7	23.0%	45.1%	21.5%	10.6%	2.0%
8	59.3%	4.0%	20.3%	15.7%	2.0%
9	59.0%	10.0%	12.3%	18.0%	1.5%
10	62.1%	7.2%	20.4%	9.3%	2.1%
11	63.4%	6.2%	21.6%	7.7%	2.2%
12	87.5%	5.8%	2.5%	1.5%	2.1%
13	67.5%	20.5%	4.3%	5.6%	2.0%
14	83.8%	2.3%	9.6%	2.1%	1.9%
15	88.1%	4.1%	4.3%	1.4%	1.7%
16	91.2%	3.0%	2.5%	1.0%	1.8%
17	70.5%	14.4%	9.4%	3.9%	2.0%
IL	61.2%	14.7%	16.2%	6.7%	2.0%



Illinois CD	2020 President		2018 Attorney General	
	Biden	Trump	Raoul	Harold
1	78.4%	20.2%	77.8%	20.3%
2	74.9%	23.8%	74.3%	23.7%
3	54.5%	43.7%	51.2%	46.2%
4	71.6%	26.7%	71.7%	25.5%
5	78.9%	19.2%	74.6%	22.9%
6	57.4%	40.5%	50.0%	47.6%
7	87.0%	11.4%	85.1%	13.0%
8	59.7%	38.5%	54.3%	43.1%
9	73.2%	25.2%	69.9%	28.1%
10	61.7%	36.3%	54.3%	43.4%
11	56.6%	41.2%	50.6%	46.8%
12	29.1%	69.0%	31.6%	65.1%
13	55.0%	42.7%	51.6%	45.7%
14	41.9%	56.0%	39.9%	57.0%
15	31.2%	66.9%	29.6%	67.5%
16	31.8%	66.0%	30.7%	66.3%
17	54.0%	43.6%	49.4%	47.9%
Total	57.5%	40.6%	54.7%	42.7%

@AndrewPELLison